



**Electrolux**  
PROFESSIONAL

## Modular Cooking Range Line 150lt Gas Boiling Pan, direct heating

ITEM # \_\_\_\_\_

MODEL # \_\_\_\_\_

NAME # \_\_\_\_\_

SIS # \_\_\_\_\_

AIA # \_\_\_\_\_



391301 (E9BSGHDRFW)

150-lt direct gas boiling pan

### Short Form Specification

#### Item No. \_\_\_\_\_

To be installed on height adjustable feet in stainless steel. Suitable for natural gas or LPG. Robust burners in stainless steel with flame failure device and protected pilot light. Thermostatic temperature control for power regulation allowing precise temperature cooking. Exterior panels in stainless steel with Scotch Brite finish. One piece pressed work top in 1.5 mm thick stainless steel. Right-angled side edges to allow flush-fitting junction between units.

### Main Features

- Round kettle is suitable to cook, sauté or poach all kinds of produce.
- Produce is uniformly heated in the base and side walls of the kettle by a direct heating system.
- Appliance is IPX5 water resistance certified.
- No overshooting of cooking temperatures, fast reaction.
- Large capacity food tap enables safe and effortless discharging of contents.
- Ergonomic: the depth of the vessel facilitates stirring the food, also the most delicate food.
- Discharge tube and tap are very easy to clean from outside.
- Smooth large surfaces, easy access for cleaning.

### Construction

- Pressed cooking vessel in 316L AISI Stainless steel.
- Robust burners in stainless steel with flame failure device, protected pilot light and optimized combustion.

### Sustainability

- Firmly fitting cover to reduce cooking time and save energy costs.



### Optional Accessories

- |   |            |                          |
|---|------------|--------------------------|
| • Junction sealing kit                                      | PNC 206086 | <input type="checkbox"/> |
| • Draught diverter, 150 mm diameter                         | PNC 206132 | <input type="checkbox"/> |
| • Matching ring for flue condenser, 150 mm diameter         | PNC 206133 | <input type="checkbox"/> |
| • Kit 4 wheels - 2 swivelling with brake                    | PNC 206135 | <input type="checkbox"/> |
| • Flanged feet kit  | PNC 206136 | <input type="checkbox"/> |
| • Frontal kicking strip for concrete installation, 800mm    | PNC 206148 | <input type="checkbox"/> |
| • Frontal kicking strip for concrete installation, 1000mm   | PNC 206150 | <input type="checkbox"/> |
| • Frontal kicking strip for concrete installation, 1200mm   | PNC 206151 | <input type="checkbox"/> |
| • Frontal kicking strip for concrete installation, 1600mm   | PNC 206152 | <input type="checkbox"/> |
| • 2 SIDE KICKING STRIPS- CONCRETE INST-900                  | PNC 206157 | <input type="checkbox"/> |
| • Frontal kicking strip, 800mm (not for refr-freezer base)  | PNC 206176 | <input type="checkbox"/> |
| • Frontal kicking strip, 1000mm (not for refr-freezer base) | PNC 206177 | <input type="checkbox"/> |
| • Frontal kicking strip, 1200mm (not for refr-freezer base) | PNC 206178 | <input type="checkbox"/> |
| • Frontal kicking strip, 1600mm (not for refr-freezer base) | PNC 206179 | <input type="checkbox"/> |
| • Pair of side kicking strips (not for refr-freezer base)   | PNC 206180 | <input type="checkbox"/> |
| • 2 panels for service duct for single installation         | PNC 206181 | <input type="checkbox"/> |
| • 2 panels for service duct for back to back installation   | PNC 206202 | <input type="checkbox"/> |

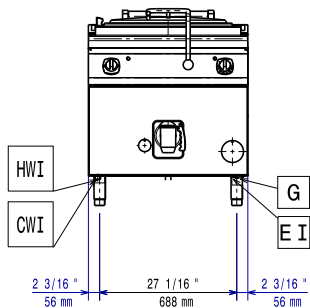
APPROVAL: \_\_\_\_\_



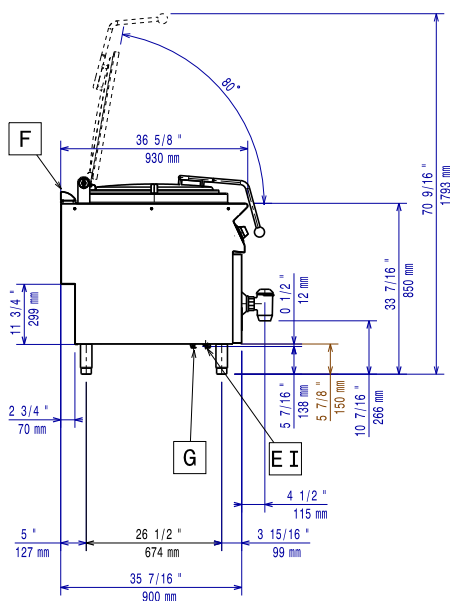
Experience the Excellence  
[www.electroluxprofessional.com](http://www.electroluxprofessional.com)  
ELUX\_EMAIL

- |   |            |                          |
|---|------------|--------------------------|
| • Kit 4 feet for concrete installation (not for 900 line free standing grill) | PNC 206210 | <input type="checkbox"/> |
| • Flue condenser for 1 module, 150 mm diameter                                | PNC 206246 | <input type="checkbox"/> |
| • Chimney upstand, 800mm  | PNC 206304 | <input type="checkbox"/> |
| • Base support for feet or wheels - 800mm (700/900)                           | PNC 206367 | <input type="checkbox"/> |
| • Base support for feet or wheels - 1200mm (700/900)                          | PNC 206368 | <input type="checkbox"/> |
| • Base support for feet or wheels - 1600mm (700/900)                          | PNC 206369 | <input type="checkbox"/> |
| • Base support for feet or wheels - 2000mm (700/900)                          | PNC 206370 | <input type="checkbox"/> |
| • Rear paneling - 800mm (700/900)   | PNC 206374 | <input type="checkbox"/> |
| • Rear paneling - 1000mm (700/900)  | PNC 206375 | <input type="checkbox"/> |
| • Rear paneling - 1200mm (700/900)  | PNC 206376 | <input type="checkbox"/> |
| • Chimney grid net, 400mm (700XP/900)   | PNC 206400 | <input type="checkbox"/> |
| • 2 side covering panels for free standing appliances                         | PNC 216134 | <input type="checkbox"/> |
| • Trolley with lifting & removable tank                                       | PNC 922403 | <input type="checkbox"/> |
| • - NOT TRANSLATED -  | PNC 925019 | <input type="checkbox"/> |
| • - NOT TRANSLATED -  | PNC 927002 | <input type="checkbox"/> |
| • Pressure regulator for gas units  | PNC 927225 | <input type="checkbox"/> |

Front

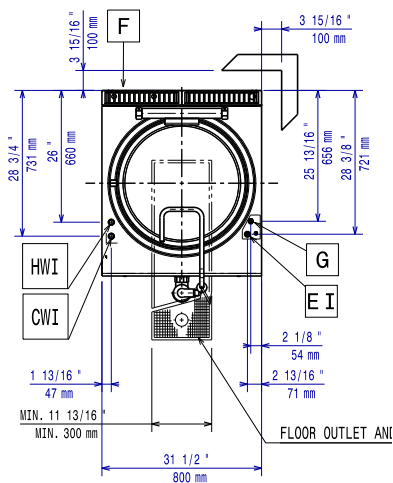


Side



CWI = Cold Water inlet  
 D = Drain  
 EI = Electrical inlet (power)  
 G = Gas connection  
 HWI = Hot water inlet

Top



### External dimensions

No clearance needed on rear sides of unit if wall is of non combustible type. If wall is combustible, minimum 50 mm wall clearance should be maintained.

### Electric

Supply voltage: 220-230 V/1 ph/50 Hz  
 Total Watts: 0.1 kW

### Gas

Gas Power: 24 kW  
 Gas Type Option: LPG; Natural Gas  
 Gas Inlet: 1/2"

### Key Information:

Pan useful capacity: 143 lt  
 Vessel (round) diameter: 600 mm  
 External dimensions, Width: 800 mm  
 External dimensions, Depth: 930 mm  
 External dimensions, Height: 850 mm  
 [NOT TRANSLATED] N9PDG